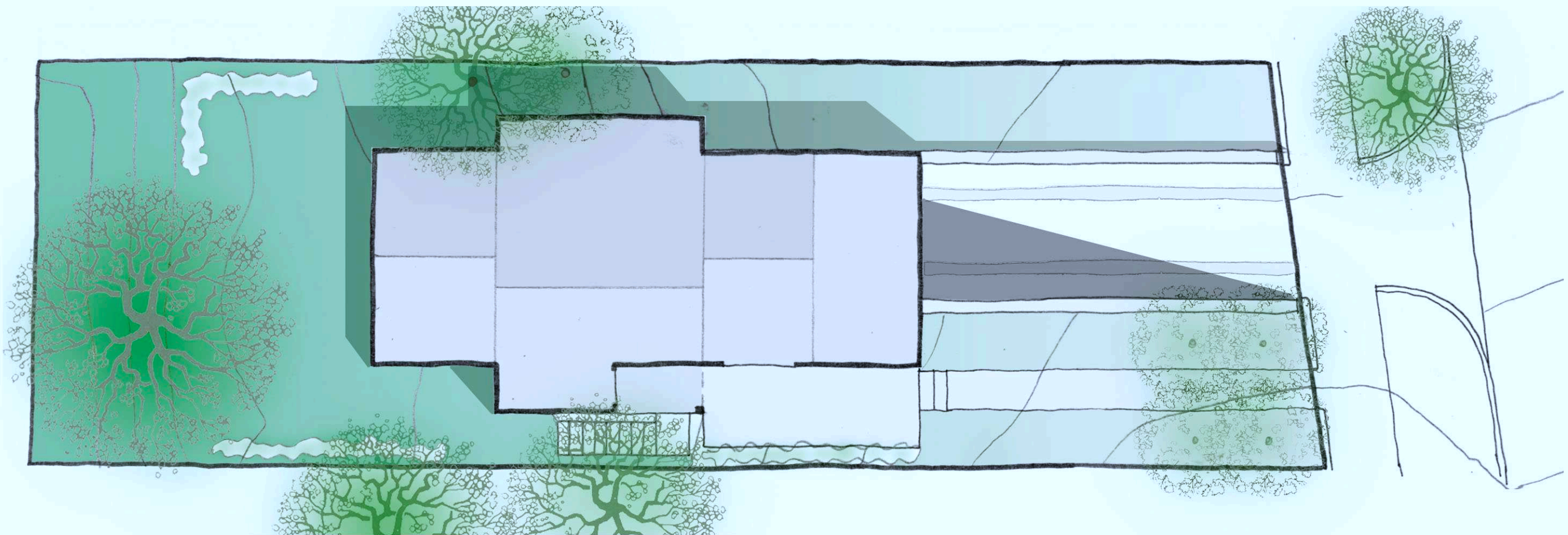


# A Small Urban House

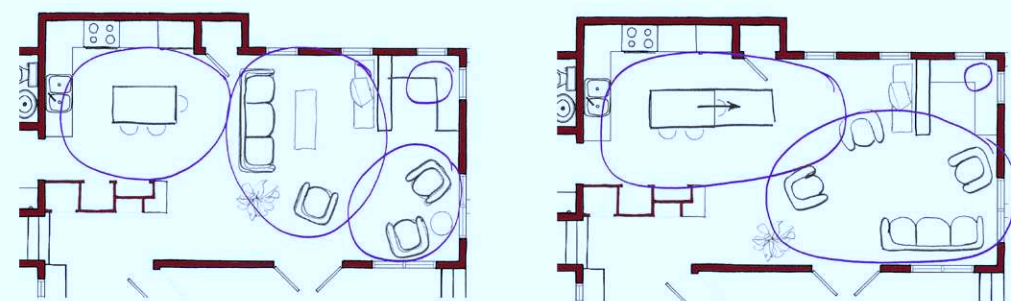


Does a small house need to *feel* small?

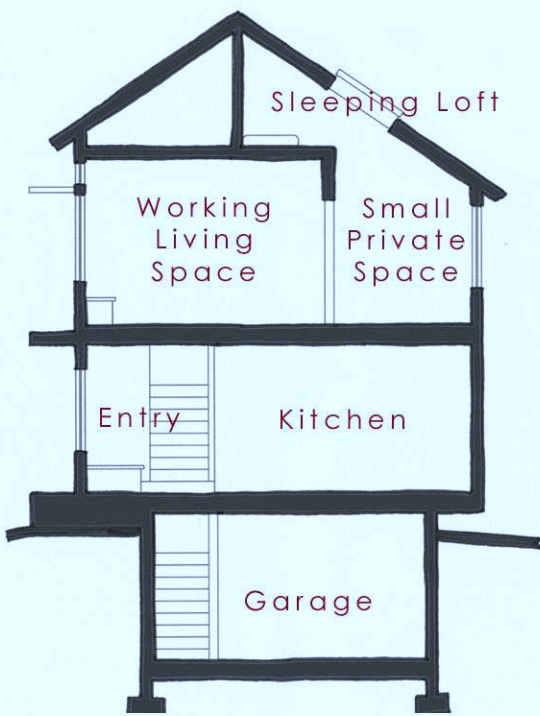
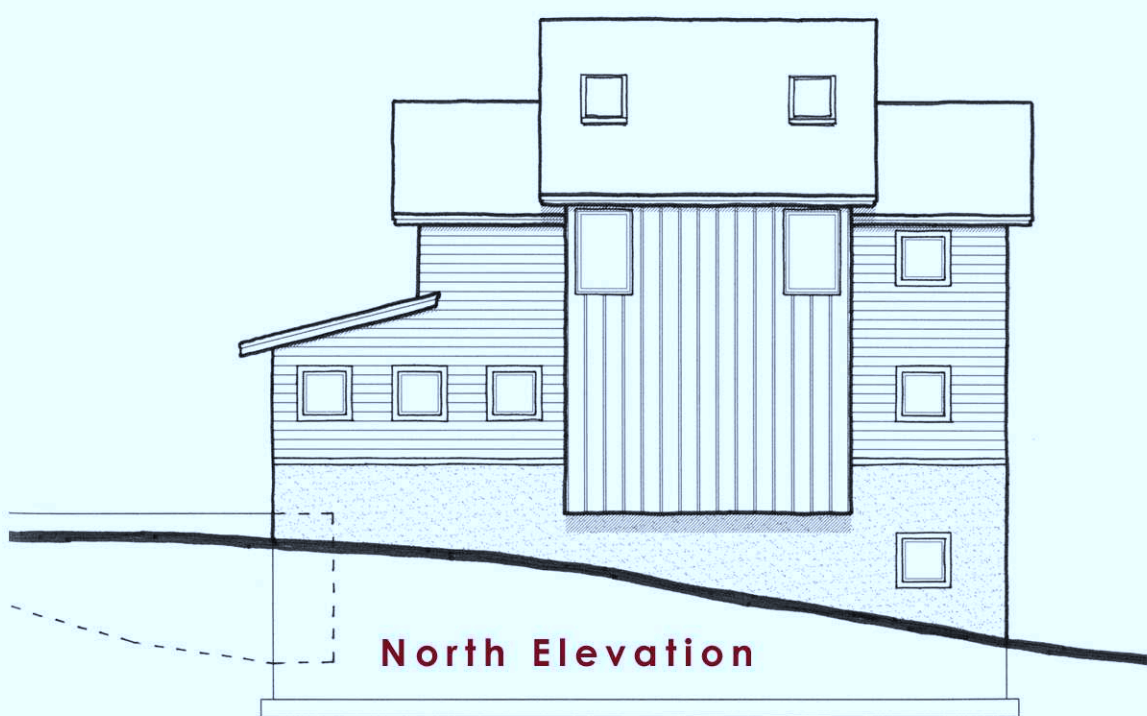
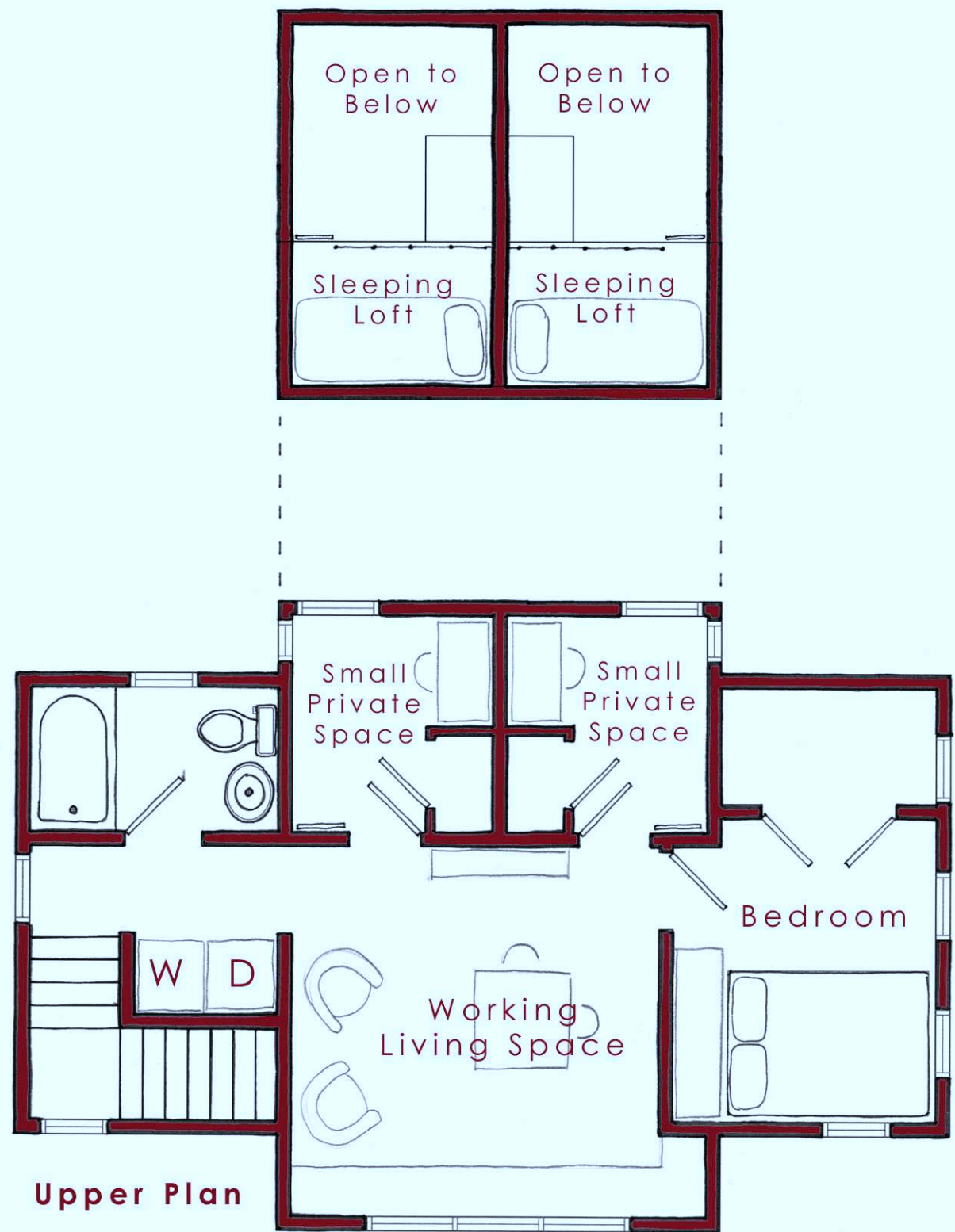
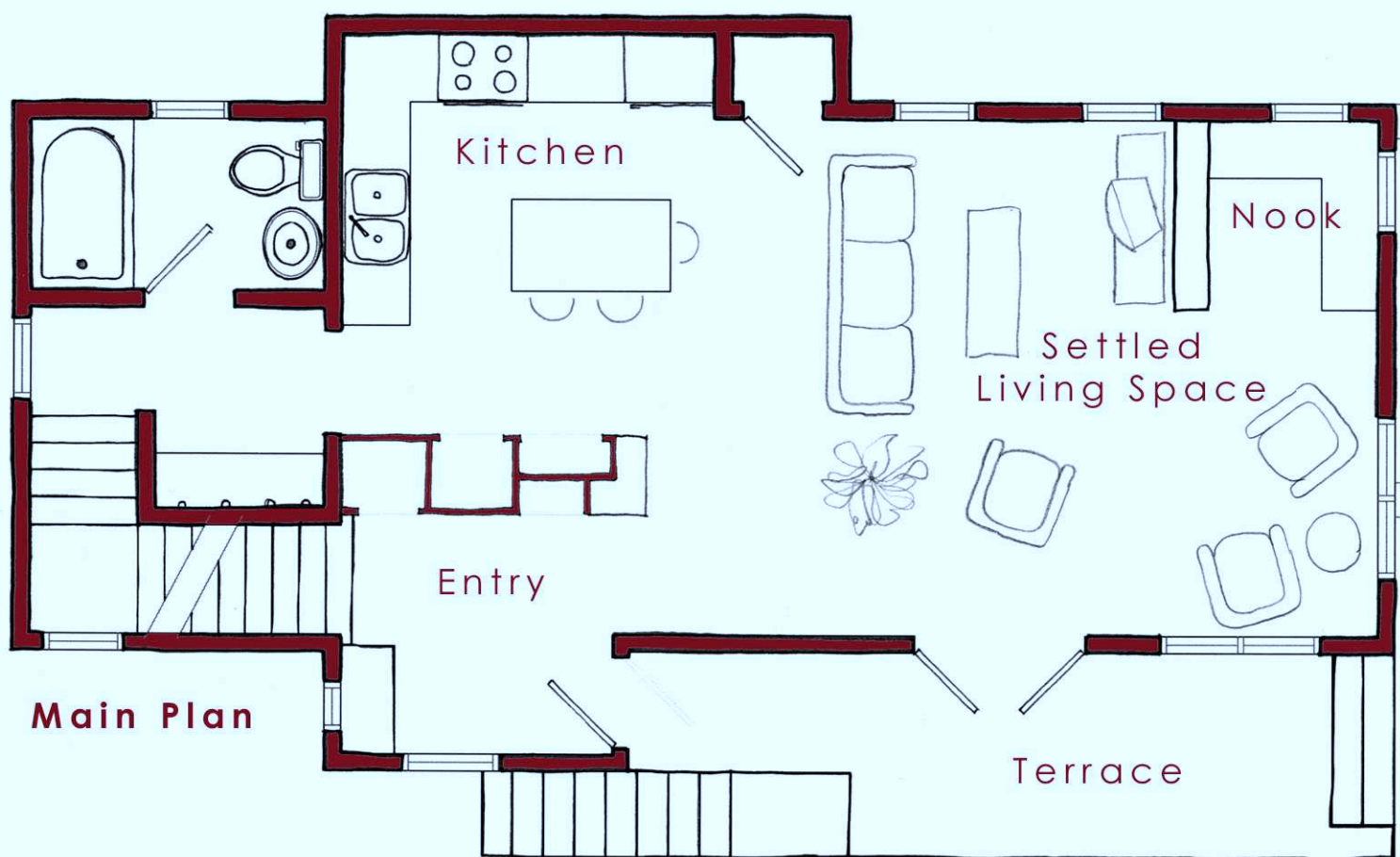
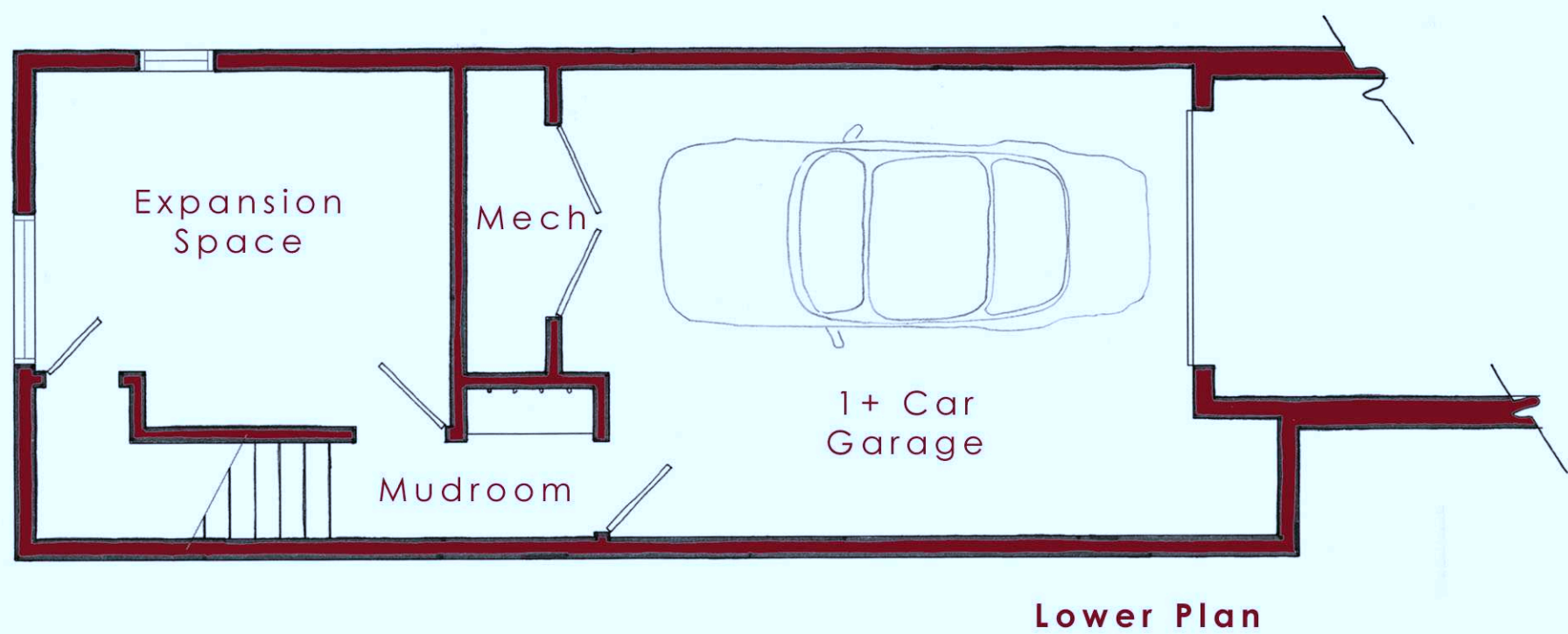


## Strategies:

- The design of this prototype lends itself to **optimal re-application** on other sub-standard lots (with a similar solar aspect) in St Paul and beyond as it clusters closed, private places to the North, and open, public spaces to the South.
- utilize **comparitive scales** and a range of space sizes to serve individuals as well as entire families.
- design spaces to **adapt** spatially and functionally as they are **activated** by their inhabitants



- subtly **re-evaluate** how space is actually used  
which codes guard "human safety" (egress requirements), and which only affect "human welfare" issues that vary greatly by generations and cultures (square footage of a bedroom)?
- making private rooms **intimately** small creates extra square footage for enlarging **communal** family spaces
- new spatial and visual ideas **spark interest** in an established neighborhood while still **respecting** the existing context



## Square Footage

- 1325 finished (3 bed, 2 bath)
- 235 expansion (4 bed, 2 bath)

## Exterior Finish Materials

- stucco base (cream)
- cement board lap siding on main house (white)
- cement board/batten on "saddlebag" (red)

...feeling neither large nor small,  
the house feels *comfortable* for living within

